

**Y9 Options  
Information Booklet  
March 2023**



## Courses at Key Stage 4

The courses students will study at KS4 are either core or optional.

### Core

Core subjects must be studied by all students and most (but not all) of them are examined at GCSE.

Core Subject	Number of GCSE's	Notes
English	2	English Language & English Literature
Maths	1	
Science	2	Double Award
History or Geography	1	Included in the option form
Core PE	Subject is not examined	
Relationships and Sex Education	Subject is not examined	ACHIEVE
Religious Studies	Subject is not examined	Delivered through tutor, external visitors and drop down days.

### Optional (all students will study two options from the following subjects)

Optional Subject	Notes
GCSE Art and Design	
OCR Child Development	
GCSE Computer Science	
BTEC Dance	
GCSE Design Technology	
GCSE Drama	
BTEC Enterprise	
GCSE Business Studies	
GCSE Food Preparation and Nutrition	
GCSE French	
BTEC Health and Social Care	
Creative iMedia	
GCSE Music	
GCSE Religious Studies	
Triple Science	<b>This allows a student to gain three GCSE's in Science</b>
BTEC Sport, Activity and Fitness	
BTEC Travel and Tourism	

### Option Choices Form

The options form will be handed out when the following events have all been completed:

- The guided options evening (Thursday 23<sup>rd</sup> March)
- Parents evening (Thursday 20<sup>th</sup> April)
- Taster lessons (After Easter)

This will assist student and parents in making the correct decision based on a global set of information. Further details to follow regarding the options form.

## What should you consider when choosing your options?

- Do you bring or are you proactive in getting support when bringing in food ingredients? If no, then why would you want to choose GCSE Food?
- Do you bring your PE kit in every week or do you sometimes forget or not want to do PE? If so, why would you want to study BTEC PE?
- Think about the skills that are needed for the subject – do you have what it takes?
- What do you enjoy currently in Year 9?
- Consider your future career plans and how this subject may fit in – refer back to your ACHIEVE/RSE lessons, your Future Plans page on Ello and your Start locker.
- Feel free to talk to the people listed below – you may have questions that the booklet cannot answer.
- Use the sources of information too, there is plenty of great advice out there to help you.

## How can parents/guardians help?

- Support them by researching their options and discuss each option with them
- Guide them towards using their strengths and setting realistic goals – have a look at their Ello page (predicted grades, progress, future plans)
- Help them complete their options form
- Encourage them to meet the deadline
- Parents can also email us via [careers@ellowes.dudley.sch.uk](mailto:careers@ellowes.dudley.sch.uk) or use the parents section on our careers website: <https://www.elloweshallcareers.co.uk/>

## Where can I get help and support from?

- ACHIEVE/RSE Teacher – they are experienced in helping students make their choices
- Subject Teachers – talk to your subject teachers about the courses you are considering
- Tutors – they know you well and will be able to guide you
- Parents, friends and family – they may have studied the courses that you are considering so their advice and support is valuable
- Head of Careers, Mrs Toro-Pearce: [careers@ellowes.dudley.sch.uk](mailto:careers@ellowes.dudley.sch.uk)

## Websites to use

Ellowes Hall careers website

<https://www.elloweshallcareers.co.uk/>

Ello Careers/ACHIEVE lessons

<https://ello.invictus.education/Folder.aspx?FolderID=21765>

Start

<https://www.startprofile.com/>

Connexions advice on choosing options

<https://connexionsdudley.org/years-89/choosing-your-options/>

BBC Bitesize careers information

<https://www.bbc.co.uk/bitesize/careers>

National Careers Service

<https://nationalcareers.service.gov.uk/>

How2become

<https://www.how2become.com/>

# Core Subjects Information

In this section, you will find key information from the core subjects that all students will study.

# AQA GCSE English Language (Core)

## What will I study?

### **Paper One – Explorations in Creative Reading and Writing**

For this paper, you will study a range of extracts from different fiction novels focusing on topics such as 'War', 'Problematic Women', 'The Supernatural' and 'The Gothic'. You will explore writers' craft and how they use language and structure for effect.

You will also be taught to write like an author, crafting your own creative writing to produce description and narratives that convey specific atmosphere, tone, setting and characters.

### **Paper Two – Writer's Viewpoints and Perspectives**

For this paper, you will study a range of non-fiction extracts which focus on a range of topics such as 'Growing up in the 21<sup>st</sup> Century', 'Science and Technology', 'Crime and Detection' and 'Politics and Power'. You will look at texts from the 19<sup>th</sup> century and compare them to modern texts to explore how writer's opinions have changed over time.

You will also be taught to express your own viewpoints on current topics through your own transactional writing, altering tone and language depending on genre, audience and purpose.

## Which skills will I need to do well in this subject?

You need to be able to utilise reading skills to help you comprehend both fiction and non-fiction texts. Reading widely outside of the classroom will really support you with this. You also need to have confidence in being able to articulate your ideas creatively through fiction and non-fiction written work. Listening skills are really important so that you can respect the opinions of others in the classroom to help you widen your own understanding of the world.

## How I will be assessed?

Both papers will be graded from 9-1 and each is worth 50% of the total grade for GCSE English Language. All final exams will be undertaken in the summer of year 11, but you will sit mock exams in year 10 and year 11 to help you prepare for the final external exams.

You will complete a spoken language assessment in year 10 which is necessary to gain your GCSE in English language. You will receive a pass, merit or distinction for your presentation and response to questions, but this will not have a direct impact on the GCSE grade that you receive.

## What is the split between examinations and controlled assessment?

There is no controlled assessment for GCSE English Language. The spoken language assessment will be internally graded within school.

You will be awarded your final GCSE grade based on the external exams that you sit.

## Who is the course for?

All students have to study English language at GCSE but the course will help you access your other choices made at GCSE in terms of building your reading comprehension and written ability and confidence.

### **Where can this course take me after school?**

The usual career path is GCSE, 'A' Level English Language, Degree, Post-graduate degree and a job.

### **Which careers might be suitable with this qualification?**

Some possible careers are as follows:

Directly related to an English language degree: Author, Digital Copywriter, Editor/Editorial Assistant, English teacher, Journalist, Proof-reader, Publicist, Lexicographer.

A degree in English can also open other job opportunities that don't necessary link directly to the degree, such as in management and public relations.

### **Who can I contact if I want some more information?**

**Name:** Mrs A Tennant

**Email address:** [atennant@ellowes.dudley.sch.uk](mailto:atennant@ellowes.dudley.sch.uk)

# AQA GCSE English Literature (Core)

## What will I study?



## **Paper One – Shakespeare and the 19<sup>th</sup> Century Novel**

For this paper, you will study a Shakespeare play (Macbeth) and a 19<sup>th</sup> Century Novel (Jekyll and Hyde by R.L. Stevenson). For each text you will explore the context in which it is written, the form and genre, key themes and plot and character. You will also explore the text in terms of the writer's craft and different ways in which the text may be received by audience/reader.

## **Paper Two – Modern Texts and Poetry**

For this paper, you will study an anthology of fifteen poems in the 'Power and Conflict' cluster focusing on how the poems connect through themes, context and poet's ideas. You will also learn how to explore unseen poetry through the independent study of poetry that isn't directly taught. For the modern text, you will study the play An Inspector Calls by J.B. Priestley, exploring the dramatic form, key themes, plot and character. You will also explore the text in terms of the writer's craft and different ways in which the text may be received by audience/reader.

## Which skills will I need to do well in this subject?

You need to be able to utilise reading skills to help you comprehend the texts that you are reading in lesson. Reading widely outside of the classroom will really support you with this, especially when reading work by the same authors or texts that are part of the same genre. You also need to have confidence in being able to articulate your ideas and understanding of the text using a formal academic style. In your lessons, your teachers will help you achieve this written style.

## How I will be assessed?

Both papers will be graded from 9-1. Paper 1 is worth 40% and Paper 2 is worth 60% of the total grade for GCSE English Literature. All final exams will be undertaken in the summer of year 11, but you will sit mock exams in year 10 and year 11 to help you prepare for the final external exams after you have studied the texts. You are not allowed to take your texts into the exams, you will be expected to recall key quotations from memory.

## What is the split between examinations and controlled assessment?

There is no controlled assessment for GCSE English Literature.

You will be awarded your final GCSE grade based on the external exams that you sit.

## Who is the course for?

All students have to study English language at GCSE but the course will help you widen your understanding of past and present day through the study of texts from different time periods, genres and forms.

### **Where can this course take me after school?**

The usual career path is GCSE, 'A' Level English Language, Degree, Post-graduate degree and a job.

### **Which careers might be suitable with this qualification?**

Some possible careers are as follows:

Directly related to an English literature degree: Archiving, Author, Digital Publisher, English Teacher, Journalist, Researcher

A degree in English literature can also open other job opportunities that don't necessarily link directly to the degree, such as in management and public relations.

### **Who can I contact if I want some more information?**

**Name:** Miss A Tennant

**Email address:** [atennant@ellowes.dudley.sch.uk](mailto:atennant@ellowes.dudley.sch.uk)



# Edexcel GCSE Mathematics (Core)

## What will I study?

You will study numeracy; algebra; proportional reasoning; shape and space; statistics and probability. This will build on the knowledge gained during Key Stage 3. There is also an increased emphasis on the application of these skills.

## Which skills will I need to do well in this subject?

- Numeracy
- Problem solving
- Logical reasoning
- Resilience
- Interpretation of data
- Clear verbal and written communication
- Literacy

## How will it be assessed?

The GCSE is assessed through one external exam, consisting of three papers. These papers will be sat in the Summer of Year 11. One of the papers is non-calculator and the other two papers are calculator.

## Who is the course for?

Everyone

## Where can this course take me after school?

Mathematics GCSE is an essential requirement for many areas of future employment or study. This may vary from the numeracy involved in the retail industry through to academic research. Mathematics is a qualification that is highly valued by employers and universities.

## Which careers might be suitable with this qualification?

As mentioned above, GCSE mathematics is required by the majority of future employers or places of study. These are some of the jobs which would use Maths most frequently.

- Actuarial analyst
- Actuary
- Astronomer
- Chartered accountant
- Data analyst/scientist
- Game designer
- Investment analyst
- Research scientist (maths)
- Secondary school teacher
- Software/sound engineer
- Statistician

## Who can I contact if I want some more information?

**Name:** Mrs H Boswell (Head of Mathematics) **Email address:** [hboswell@ellowes.dudley.sch.uk](mailto:hboswell@ellowes.dudley.sch.uk)

# AQA GCSE Combined Science: Trilogy (Core)

## What will I study?

GCSE Combined Science (Trilogy) is a double GCSE taken by the majority of students. It builds on the Key Stage 3 curriculum and covers the National Curriculum Programme of Study for Science at Key Stage 4. It will encourage you to explore, explain, theorise and model in science and develops a critical approach to scientific evidence.

The exam board is AQA. More details including the full specification for GCSE Combined Science (Trilogy) is available at: <http://www.aqa.org.uk/subjects/science/gcse>

GCSE Combined Science (Trilogy) is taught as 3 subjects

**Biology:** Cell biology; Organisation; Infection and Response; Bioenergetics; Homeostasis; Inheritance, Variation and Evolution; Ecology

**Chemistry:** Atomic structure and the Periodic Table; Bonding and Properties of matter; Quantitative Chemistry; Chemical changes; Energy changes; Rate of reaction; Organic chemistry; Chemical analysis; Chemistry of the Atmosphere; Using Resources

**Physics:** Energy; Electricity; Particle model of matter; Atomic structure; Forces; Waves; Magnetism and Electromagnetism

## How will I be assessed?

The Combined Science GCSE is examined by six 1 hour 15 min written exams, each of which is worth 16.7%. There are two exams on each subject Biology, Chemistry and Physics. There are 21 required practical's that are delivered throughout the course. There will be questions relating to these practical's on the written exam papers.

## Where can this course take me after school?

GCSE Core Science gives you a good grounding in Science. Success in Combined Science can provide access to AS/A2 Science courses, including Applied Science and Psychology. In the long term, if you decide to pursue your scientific studies, it can lead to an almost limitless number of job opportunities. Highly qualified scientists are very much in demand and their skills are required in many jobs.

## Which careers might be suitable with this qualification?

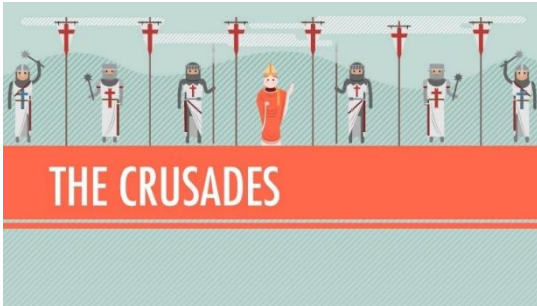
Students who have gained good grades in GCSE Science are able to go straight into the workplace, often working as an apprentice to gain further qualifications. Some of these careers include: animal husbandry; animal technician; brewery worker; laboratory technician; pharmacy retail worker; and many more.

## Who can I contact if I want some more information?

**Name:** Mrs Ming

**Email address:** [rming@ellowes.dudley.sch.uk](mailto:rming@ellowes.dudley.sch.uk)

# EDUQAS GCSE History (Core)



## What will I study?

GCSE History is made up of 4 units. You are expected to cover a range of 3 time periods across these units and to address both British and International History. There is an expectation to study something thematically over a period of time and within these units there is a range of both knowledge and source-based skills.

With these parameters in mind we have chosen the following topic areas:

- Component 1D: Austerity, Affluence and Discontent. Britain 1951-1979
- Component 1E: The Crusades c1095-1149
- Component 2B: The Development of Germany 1919-1991
- Component 2F: Changes in Health and Medicine c.500 to the present day

And so our Medieval topic is the Crusades, looking at the importance of fighting in the Middle East nearly 1000 years ago over the city of Jerusalem. Great topic for those of you interested in how religion and history sit hand in hand!

Our thematic topic is Medicine allowing us to look at the theme of health over a long period of time. Lot of gory images and stories to tell!

The Britain topic allows us to look at a time period that wasn't that too far away and has a huge impact on your lives today. Loads of things your Grandparents will remember!

And finally, Germany is our International Topic, always a firm favourite considering the terrible things that happened.

## Which skills will I need to do well in this subject?

To do well in History you need a keen interest in research, an ability to sniff out the truth and the skills to be able to look at events with a critical eye. There is lots of decision making in History and so you need to be able to weigh up the evidence to make these decisions.

It helps if you have a critical mind too! We use lots of sources of information in History and we need people who can spot a lie or over-exaggeration if there is one!

You need to be able to make links. History is like on big chain and everything links together somewhere. Being able to make these links is vital to success.

And finally, you need to be able to learn from a range of places. We look at pictures, documentaries, testimonies, films, songs, diaries – you name it, we look at it! And every single one of these is a learning resource.

### **How will I be assessed?**

Assessment is all by exam. There are four exams each made up of the content per unit that is listed above. Each exam has a series of questions ranging from 4 marks up to 19 marks. Spelling, Punctuation and Grammar is taken into consideration in a question per paper.

In the Medicine exam you have 75 minutes to answer 7 questions ranging from 4 marks to 19 marks.

In the Germany exam you have 45 minutes to answer 5 questions ranging from 4 marks to 12 marks.

In the Britain exam you have 60 minutes to answer 5 questions ranging from 4 marks to 12 marks.

In the Crusades exam you have 60 minutes to answer 5 questions ranging from 4 marks to 12 marks.

### **What is the split between examinations and controlled assessment?**

This is 100% exam split into 4 examinations.

### **Who is the course for?**

Anyone! History gets the interest of most people even if you don't think it does! We all use the phrase, "Do you remember when..." and this goes to show the importance of being able to look back.

### **Where can this course take me after school?**

GCSE History is a traditional subject and is well thought of in all sixth form colleges and advanced training centres. It shows your ability to work independently and in groups and your ability to look at evidence to make an informed decision. This GCSE will take you to A Levels, Degrees, Masters, PHDs and beyond!

### **Which careers might be suitable with this qualification?**

Everything!

There is no career that is not applicable to history due to the research and analytical skills you gain from completing this GCSE.

Fancy being a Criminologist? Then this is the GCSE for you? A Politician? Yep sign up for History! A Travel Writer? Absolutely!

The world really is your oyster when you take GCSE History and it isn't just for those who want to work in an old library or teach!

Type into the internet who has a History degree and you will be inundated with famous celebrities with a degree in History, all starting from GCSE.

### **Who can I contact if I want some more information?**

**Name:** Miss L Jones

**Email address:** [ljones@ellowes.dudley.sch.uk](mailto:ljones@ellowes.dudley.sch.uk)

# AQA Geography (Core)



## What will I study?

The GCSE Course is split into three sections:

### **Unit 1 – Living with the Physical Environment**

Natural Hazards, Ecosystems including Rainforests & Extreme Environments, and Coasts & Rivers

### **Unit 2 – Challenges in the Human Environment**

Urban Issues and Challenges including a study of London and Rio de Janeiro, Changing Economic World, Natural Resources

### **Unit 3 – Geographical Applications**

Fieldwork and an Issue Evaluation, which contains a decision-making exercise based on a pre-release resources booklet made available 12 weeks before the Unit 3 exam.

## Which skills will I need to do well in this subject?

As the course is so broad, having good numeracy, literacy and scientific skills will be very important. If you choose Geography you must be prepared to work hard and be interested in the world around you. You will be required to develop and demonstrate a range of geographical skills, including the use of maps, numbers and statistics. Spelling, punctuation and grammar are assessed in all three examinations.

## How will be assessed?

There are three examinations at the end of Year 11:

- Unit 1 (1hr 30mins) tests Physical Geography (3 topics)
- Unit 2 (1hr 30mins) tests Human Geography (3 topics)
- Unit 3 (1hr 15mins) tests Fieldwork and contains a Decision-Making Exercise

## What is the split between examinations and controlled assessment?

There is no controlled assessment in the GCSE course

## Who is the course for?

If you are interested in understanding the world's people, places and environments then Geography is the choice for you. It illuminates the past, explains the present and prepares us for the future. What can be more important than that?

Geography is one of the most popular option choices at GCSE with over a third of students in England taking the subject. Geography is not only up-to-date and relevant, it is one of the most exciting, adventurous and valuable subjects to study at GCSE level. So important, in fact, that the *Guardian* newspaper in 2015 named Geography as a 'must-have GCSE and A-Level' to help you make sense of the world.

### **Where can this course take me after school?**

If you are not sure about what you want to do in the future, Geography helps to keep your options open. It is a subject that goes well with the Sciences and Mathematics as well as the Humanities, Languages and Arts. It is very flexible in terms of what it can be combined with both at GCSE and A Level.

There are so many ways of learning in Geography. It is very practical with opportunities to learn new skills such as modern computer-based mapping (called GIS), digital technologies, map skills, interpreting photographs, analysing articles, decision-making and debating.

Fieldwork and trips are a really important part of Geography. You will learn how to investigate issues in the real world. You will improve your literacy through your report writing and written work and you will also learn how to put forward your own point of view and convince others that you are right!

You will make practical use of your numeracy skills when you interpret data and construct graphs. Your memory skills will also be boosted as you learn key memory techniques to help you remember case study information (facts and figures about places).

Such a wide variety of skills gained in Geography will be useful to you after you leave school. These skills are highly sought after by sixth form colleges, universities and employers.

### **Which careers might be suitable with this qualification?**

Students who have studied Geography have gone on to work in the following sectors: law, science, sales, business, environment, information technology, management, finance, banking, marketing, research, manufacturing, teaching, childcare, engineering and building, arts, design and media, town planning, working abroad and many (many) more...

### **Who can I contact if I want some more information?**

**Name:** Mr J Ming

**Email address:** [jming@ellowes.dudley.sch.uk](mailto:jming@ellowes.dudley.sch.uk)

# Physical Education Lessons (Core)

Physical Education at Ellowes Hall Sports College provides so much more than giving our students the opportunity to develop their sporting skills. There is lots of scientific evidence that proves that taking part in physical activity can have a profound and positive impact on mental wellbeing. Being physically active can improve mood, decrease the chance of depression and anxiety and lead to a better and more balanced lifestyle. We are really passionate about developing the students in our care in order to ensure students are the very best version of themselves they can be.

During Key Stage 3 lessons students will have continually developed their core physical skills and learnt how to take part in a variety of activities. Key Stage 4 PE lessons shift their focus from learning and developing basic skills, to focussing on how to develop tactics and strategies that can be applied in both team sports and individually based activities. There is also a greater emphasis upon students understanding the importance of developing a healthy lifestyle and the role sport and activities can have upon this. Students will look at different roles associated within sport such as a captain, official and leadership to develop a greater holistic appreciation and knowledge of these key areas.

Assessment in Key Stage 4 Physical Education will continue as it did at Key Stage 3 so that our staff and students can monitor/track their progress. It is vital that students know how much progress they have made as it has a positive impact on self- confidence and may motivate students to continue with sports once they leave education.

Students will focus upon three core concepts of Physical Development / Mental Development and Emotional Development. This builds upon KS3 knowledge with sporting activities modelled around these key concepts, and is designed to give students the depth of knowledge needed to live a healthy active lifestyle for Post 16 and beyond.

Students will opt for a pathway that will enable them to know all of the activities that they will participate in during both Y10 and Y11 CORE PE lessons. There will be the opportunity for students to opt for a more 'traditional' route which features a lot of games-based activities such as Football, Basketball and Handball. There will also be a pathway that allows more 'alternative/non invasion' activities. This is to ensure that we can enable our students to follow a pathway that they enjoy but also challenges them to make progress in an environment that they feel comfortable in.

## Who can I contact if I want some more information?

Name: Mr I. Smith Email address: [I.Smith@ellowes.dudley.sch.uk](mailto:I.Smith@ellowes.dudley.sch.uk)



# ACHIEVE/RSE (Core)

## What will I study?

What does ACHIEVE stand for?

- Aspirations
- Citizenship
- Health & wellbeing
- Individual development
- Economic wellbeing
- Values
- Equality

ACHIEVE is a subject that combines PSHE (Personal, Social, Health & Economic Education), Citizenship and Careers Education. PSHE incorporates physical health and mental wellbeing, relationship and sex education, plus living in the wider world. In years 10 and 11, you will continue with the big questions that you have studied within years 7, 8 and 9:

- How can I take care of my physical and mental wellbeing?
- What do I need to know about living in the wider world?
- How can I ensure that I have healthy relationships?
- What is my career path and where will it take me?

## Which skills will I need to do well in this subject?

ACHIEVE is skills based so you will develop skills such as:

- Communication: there is lots of discussion and debating including listening and talking
- Open minded: you will be listening to everyone's viewpoint and showing understanding, even if you don't agree with it

## How will be assessed?

ACHIEVE is slightly different to other subjects as it is not exam based so you will not sit any formal exams. However, you will still be assessed to ensure that you have made progress – for example, what did you know at the start of a topic and what do you know at the end? Hopefully, you will have made progress by increasing your knowledge and understanding.

## Who is the course for?

Everyone! ACHIEVE is intended to help you grow as a person. You will develop the skills needed to live a happy and healthy life by reaching your full potential and achieving your dreams. You will learn to be an active citizen, acquire financial literacy skills and prepare for the working world. In essence, life skills.

## Where can this course take me after school?

By studying ACHIEVE, you will be able to make informed choices. This subject will help you grow in self-confidence by developing your knowledge, skills and attributes to manage your life now and in the future. It will motivate you to achieve your dreams. It will not lead to a career but it will help you get onto your career pathway.

## Who can I contact if I want some more information?

**Name:** Mrs A. Toro-Pearce

**Email address:** [atoropearce@ellowes.dudley.sch.uk](mailto:atoropearce@ellowes.dudley.sch.uk)



# Religious Studies



## What will I study?

You will study beliefs, teachings and practices from both Christianity and other religious viewpoints. You will also study ethical topics such as religious attitudes to matters of life and death where we look at humanity the modern day. We cover topics such as:

- Religions and morality, why is life special, looking at fertility treatment, artificial insemination, transplant surgery, cloning.
- Religion and Life which includes what is death how should we treat and look after the elderly.
- Euthanasia help the dying and bereaved.
- Death and the afterlife.
- Religious attitudes to drug abuse where we look at right and responsibilities, legal drugs, social drugs and look into the religious views on addiction.
- Religion, peace and conflict looking at violent protests, reasons for war, nuclear and mass destruction,
- Religious human rights and social justice where we look at prejudice and discrimination, religious freedom, disability, race.
- Wealth and poverty and how to help the poor.

All the topics are looked at from a Christian also other religions and an atheist viewpoint.

## Which skills will I need to do well in this subject?

You will need knowledge, understanding and evaluation skills from both religions. Learn quotes and key ideas from both the Bible and one other religion. You will learn key words and evidence used to back up ideas from the religions.

You will need to answer 5 questions on each topic all done in the same format. Question 1 of the multi choice worth (1 mark) Question 2 is factual (worth 2 marks), Question 3 (worth 4 marks) and Q4 is knowledge and understanding and worth (5 marks). Question 5 is a combination of all three skills. Answering a statement from both a Christian, and another religious viewpoint along with their own perspective. This question is worth (6 marks plus spag marks)

## How will be assessed?

- Each topic covered will be assessed on knowledge, understanding and evaluation of the different religious viewpoints to each topic content. (5 questions)

## Who is the course for?

The course helps pupils who wish to work with people in a multi- cultural society. By studying everyday life issues such as death and dying, drug abuse, poverty in society and looking at aid agencies and how to get help when it is needed. helps pupils to understand how any profession that works with people to understanding the multicultural aspects of life.

**Which careers might be suitable with this qualification?**

The course helps pupils who wish to carry on with religious education to help in career such as doctors, nurses, police, ambulance, social workers, teachers, prison officers, paramedic any profession that works within the multi-cultural society in the UK and beyond.

**Who can I contact if I want some more information?**

**Name:** Miss J Hanson

**Email address:** [jhanson@ellowes.dudley.sch.uk](mailto:jhanson@ellowes.dudley.sch.uk)

# Option Subject Information

In this section, you will find key information from the option subjects that you can choose from.

# OCR GCSE (1-9) Art and Design (Option)

## What will I study?

UNIT ONE - Drawing. Theme. Portraits.

You will learn different drawing techniques and improve your observation and recording skills.

You will use art materials such as pencil, charcoal, pen and wash, soft pastel, oil pastels and mixed media.



Examples of work by year 10 students using pen/wash, sgraffito, charcoal, soft pastel and oil pastel.

UNIT TWO - Painting. Theme. The Built Environment.

You will learn different painting techniques linked to artists.

The techniques are Alla Prima, Impasto and Pointillism.

Examples of painting techniques by year 10 students.



UNIT THREE –Print making. Theme. Celebration.

You will learn how to mono-print, stencil print and block print.

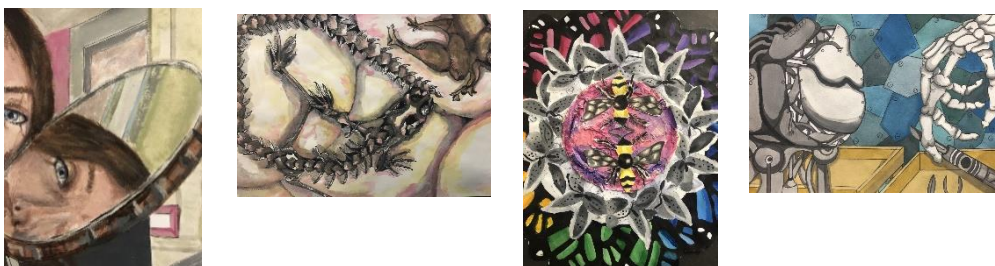
Examples of prints by year 10 students.



In the final term of year 10, you will begin your GCSE Portfolio.

The choice of themes for the portfolio work are Reflections, Organic Forms, Home and Man-Made Forms.

Below are examples of different interpretations of the themes by GCSE students.



### Which skills will I need to do well in this subject?

To be successful in this subject, it is important that you are willing to explore new media, processes and techniques. That you show resilience as you develop your skills and have a positive attitude. There will be work that needs to be completed at home and on occasion, you will be asked to find your own resources to work from. Always wanting to present your best work that is detailed and thoroughly thought out is also beneficial to your development in this subject. Being organised with materials, homework and meeting deadlines is essential. Being able to use the drawing and media skills you learnt in Key Stage 3 is an important foundation for the development of your year 10 work.

### How I will be assessed?

Each unit and main outcome will be assessed against the GCSE levels of 1-9.

There will be an exam in the Spring term of year 10, an exam in December of year 11 and your final exam will be in April in year 11. For each exam, you will be asked to create preparatory studies on a theme in advance. During the exam you are required to create a piece of art work independently. You are allowed to have your prep studies in the exam to work from.

### What is the split between examinations and controlled assessment?

The GCSE Portfolio of coursework is worth 60% of the final grade.

The Externally Set Task (including examination preparation studies) is worth 40% of the final grade.

### Who is the course for?

Students who enjoy Art and have a genuine interest and commitment to improve their skill and learn new Art techniques and processes. Students who would like a career in the Creative Arts.

### Where can this course take me after school?

The usual career path is GCSE → 'A' Level or Foundation Course at Art College → Degree → Job

### Which careers might be suitable with this qualification?

Some possible careers are as follows –

Animator, Art Therapist, Ceramic Designer, Community Arts Worker, Concept Artist, Designer, Exhibition Designer, Fine Artist, Gallery Curator, Game Artist, Illustrator, Interior Designer, Jewellery Designer, Make Up Artist, Photographer, Print Maker, Stylist, Teacher/Lecturer, Theatre Design props/scenery, VFX Artist.

### Who can I contact if I want some more information?

Name: Mrs. P. Strachan. Mrs. H. Harris

Email address: [pstrachan@ellowes.dudley.sch.uk](mailto:pstrachan@ellowes.dudley.sch.uk) [hharris@ellowes.dudley.sch.uk](mailto:hharris@ellowes.dudley.sch.uk)

# OCR Cambridge Nationals Level 1/ 2

## Child Development (Option)



### What will I study?

The Pearson BTEC Level 2 Technical Award in Child Development is for students who want to acquire technical knowledge, and technical skills, through planning, developing and adapting play opportunities suitable for young children across five areas of development.

### Which skills will I need to do well in this subject?

To be successful in this subject you need to be good at:

- Applying knowledge and understanding in vocational and realistic contexts.
- Developing and applying practical and technical skills.
- Acting with increasing independence to select and apply skills through processes and with effective use of resources.
- Achieve, explain and review the success of intended outcomes.
- Developing skills for work through management of self and working in a team.

### How will be assessed?

Components 1 and 2 are assessed through internal assessment, meaning it will be marked by the teacher and a sample sent away for moderation. Component 3: Supporting Children to Play, Learn and Develop, is assessed through a single external examination.

### What is the split between examinations and controlled assessment?

Component Title	How assessed
Component 1 – Children's Growth & Development	Internal 30%
Component 2 – Learning Through Play	Internal 30%
Component 3 – Supporting Children to Play, Learn & Develop	External 40%

### Who is the course for?

This course is for students who have an interest in covering the knowledge required as well as skills to work within the childcare sector. It is for students who enjoy helping care for younger siblings and/or relatives.

### Where can this course take me after school?

Achievement at Level 2 provides a suitable foundation for further study within the sector, supporting progression on to other vocational qualifications at Level 3, such as the BTEC Level 3 Nationals in Child Development.

### Which careers might be suitable with this qualification?

This option could lead to a career in childcare, nursing and other care careers.

### Who can I contact if I want some more information?

Name: Mrs T Viridi-Jeer Email address: [tvirdijeer@ellowes.dudley.sch.uk](mailto:tvirdijeer@ellowes.dudley.sch.uk)

# OCR GCSE Computer Science (Option)

## What will I study?

Computer Science is a modern, fascinating subject. The world depends on computers. In this GCSE you will learn about how computers work, the networks they use and how programming can create solutions to everyday problems and future challenges.

**Component 1:** 1. Systems architecture 2. Memory and storage 3. Computer Networks, connections and protocols 4. Network security 5. Systems Software 6. Ethical, legal, cultural and environmental impacts of digital technology.

**Component 2:** 1. Algorithms 2. Programming fundamentals 3. Producing robust programs 4. Boolean logic 5. Programming language and Integrated Development Environments.

As part of the course you will learn to program. Programming is a very important skill to learn.

It helps you to:

- Break down problems effectively
- Solve complex problems
- Think logically
- Learn through exploration

## Which skills will I need to do well in this subject?

In order to study the GCSE Computer Science course, you must have excellent skills in Mathematics and Computing. You must also be a motivated and driven learner who works using their own initiative.

## How will be assessed?

The GCSE is assessed through two external exams, consisting of two papers, one focusing on computer systems and one with a focus on programming, computational thinking, and algorithms.

Each exam is worth 50%, 80 marks, they are equally weighted.

## What is the split between examinations and controlled assessment?

Practical Programming:

You will need to complete a programming task or tasks during the course of study which must be submitted to the exam board, but the course is assessed through the external exams.

## Who is the course for?

Students who enjoy problem solving, critical thinking, computer programming and algorithms, mathematics, computer systems and software design.

## Where can this course take me after school?

This qualification provides you with the skills, knowledge and understanding to progress to:

- Academic qualifications e.g. A Level in Computer Science or IT related subject
- Level 3 Vocational qualifications e.g. BTEC Level 3 in Computing or IT

- Employment in the IT field

### **Which careers might be suitable with this qualification?**

This course has been designed to give you an in-depth understanding of how computer technology works. It's an excellent preparation for higher study and employment in the field of computer science.

Computer science, problem solving and IT skills can be useful in many different careers such as video game development, artificial intelligence, software engineering, animation, computer architecture, teaching, biomechanics, networking, graphics, information technology and information management, engineering and manufacturing, construction, broadcast media and performing arts, management, journalism and publishing, and medical technology. Computer Science is a great subject ... .. but combined with other subjects it can open up a whole world of opportunities!

### **Who can I contact if I want some more information?**

**Name:** Mrs O McEvoy

**Email address:** [omcevoy@ellowes.dudley.sch.uk](mailto:omcevoy@ellowes.dudley.sch.uk)



# BTEC Tech Award in Dance (Option)

## BTEC - What will I study?

The course aims to give you an understanding of what a career in the Performing Arts Dance world can entail. The majority of the course is linked to practical exploration and you will develop your skills in performing, choreographing and appreciating a range of Dance styles.

## Which skills will I need to do well in this subject?

Due to the practical emphasis of the course you will need physical and expressive skills. You will also need teamwork, creativity, commitment and motivation.

## How will I be assessed?

**Component 1: Exploring Dance** - Internal assessment (30% of your BTEC)

- You will examine professional practitioners' performance work
- Explore the links between the features of the work in a range of different styles of dance.
- You will keep a research log book and present your findings in a written piece of work

**Component 2: Developing Skills in Dance** - Internal assessment (30% of your BTEC)

- You will develop skills and techniques for performance
- Apply these skills and techniques in rehearsal and performance
- Review your own development and contribution to the performance

**Component 3: Responding to a Brief** - External assessment (40% of your BTEC)

- Understanding of how to respond to a brief
- Select and develop skills and techniques in response to a brief
- Apply skills and techniques in a workshop performance in response to a brief
- Evaluate the development process and outcome in response to a brief

## Who is the course for?

Anyone who enjoys dance, wants to develop their understanding of the performing arts industry and develop employability skills for future careers.

## Where might this course take me after school?

BTEC Level 3, Dance A-level

## Which careers might be suitable with this qualification?

Community Dance Artist/ Animator, Project Manager, Performer, Work in Dance Therapy, Choreographer, Dance Administrator, Dance Teacher/ Lecturer, Dance Journalist/ Dance Critic, Work in Musical Theatre or Commercial Dance, Exercise Instructor, Dance Coach, Dance Film Maker.

## Who can I contact if I want some more information?

Name: Mrs R. Giles    Email address: [rgiles@ellowes.dudley.sch.uk](mailto:rgiles@ellowes.dudley.sch.uk)

# Edexcel GCSE DRAMA (Option)

What will I study? - Edexcel GCSE Drama

Which skills will I need to do well in this subject?

Teamwork, communication and creative thinkers will succeed in GCSE Drama. You can choose to complete the qualification as a performer or lighting/ set/ costume or sound designer.

How will be assessed and what is the split between examinations and controlled assessment?

Component 1- Devising

This component is worth 40% of the GCSE and is internally assessed

- You will firstly need to create and develop a group performance piece this part is worth 10%
- Secondly, you will need complete a coursework portfolio that documents your devising journey. This will be between 1500-2000 words it is worth 30% of the overall GCSE.

Component 2– Scripted Performance

This component is worth 20% of the GCSE and is externally assessed (Visiting Examiner)

- Performance of two scenes from a play text the two extracts are worth **10% per scene**
- The two scenes can be performed as a group/monologue or duologue or a combination of the above.
- You can also complete this part as a set, lighting, sound or costume designer.

Component 3-Written Exam (1 hour and 45mins)

This component is worth 40% of the GCSE and is externally assessed

- In 'Section A' you will answer questions as a performer, director and designer about the play text 'An Inspector Calls' There is a total of 45marks in this section
- In 'Section B' you will write as an audience member about a play that you have been to see. You will answer two questions. There is a total of 15marks in the section.

Where can this course take me after school?

Drama and Theatre-A level , Acting/Performing Arts-BTEC

Which careers might be suitable with this qualification?

Possible career areas include: Theatre, Film/Tv, Radio, Law, Education, Event Management, TV production, NHS and the Police Force.

Who can I contact if I want some more information?

Name: Miss E Johnson    Email address: [ejohnson@ellowes.dudley.sch.uk](mailto:ejohnson@ellowes.dudley.sch.uk)

# OCR Design and Technology (Option)

## What will I study?

You will learn the theory in preparation for their examination and their NEA (Non-examination assessment).

You will need to have a basic understanding of the following materials:

- Paper & boards
- Metal
- Timbers
- Textiles
- Plastics

We will do mini NEA'S covering the materials areas so that while learning the theory side of the course you will be putting your knowledge into practice. You will learn how to use tools and equipment, sustainability, new and emerging technologies, design and making skills while studying this course.

## Which skills will I need to do well in this subject?

A plethora of skills are needed to achieve in this subject;

- A love or passion for being creative
- Resourceful - Organisational with time management.
- Resilience - Ability to problem solve and come up with solutions
- Literacy
- Numeracy
- Good communication

## How will be assessed?

50% NEA – The exam board will release your design brief in the summer of year 10. You will then have until the new year to get this completed.

50% - Assessment – This will be two hours and sat in the summer of your year 11.

## Who is the course for?

This course is suitable for anyone who wants to problem solve, work in teams, create and learn skills that will benefit them in the future.

## Where can this course take me after school?

You can continue to study design at A level which can then take you onto university. There are lots of areas that you could go into so can offer personal advice on that once you know.

## Which careers might be suitable with this qualification?

With higher education qualifications alongside key GCSE's this course will allow you to become;

- Product Designer
- Jewellery Designer
- Architect
- Games designer
- Visual merchandiser
- Fashion designer

- Milliner
- Graphic designer
- Costume designer
- Web designer
  
- Who can I contact if I want some more information?

Name: Mrs T Jones

Email address: [tjones@ellowes.dudley.sch.uk](mailto:tjones@ellowes.dudley.sch.uk)

# Edexcel GCSE Business Studies

## What will I study?

You'll start by exploring the world of small businesses through the lens of an entrepreneur. How and why do business ideas come about? What makes a successful business? You'll learn how to develop an idea, spot an opportunity and turn it into a successful business. You will understand how to make a business effective, manage money and see how the world around us affects small businesses and all the people involved.

Next, you'll move on to investigating business growth. How does a business develop beyond the start-up phase? You'll learn about key business concepts and issues and decisions you need to make when growing a business and working in a global business. You'll learn about meeting customer needs, making marketing, operational, financial and human resourcing decisions and you'll explore how the wider world impacts the business as it grows.






## Which skills will I need to do well in this subject?

If you enjoy:

- communicating and explaining your ideas
- thinking creatively and making decisions
- working with numbers and basing decisions on them (10% of marks will be for quantitative skills)
- working with numbers to solve business problems
- learning about the world of business through real and relevant local and international brands

then the GCSE Business course is the right subject for you.

## How will be assessed?

Theme 1: Investigating Small Business	Theme 2: Building a Business
 Written examination: 90 minutes  50% of the qualification (90 marks)	 Written examination: 90 minutes  50% of the qualification (90 marks)
<b>Content overview</b> <ul style="list-style-type: none"><li>• Topic 1.1 Enterprise and entrepreneurship</li><li>• Topic 1.2 Spotting a business opportunity</li><li>• Topic 1.3 Putting a business idea into practice</li><li>• Topic 1.4 Making the business effective</li><li>• Topic 1.5 Understanding external influences on business</li></ul>	<b>Content overview</b> <ul style="list-style-type: none"><li>• Topic 2.1 Growing the business</li><li>• Topic 2.2 Making marketing decisions</li><li>• Topic 2.3 Making product decisions</li><li>• Topic 2.4 Making financial decisions</li><li>• Topic 2.5 Making human resource decisions</li></ul>
<b>Assessment overview</b> <p>The paper is divided into three sections:</p> <p>Section A: 35 marks Section B: 30 marks Section C: 25 marks.</p>	<b>Assessment overview</b> <p>The paper is divided into three sections:</p> <p>Section A: 35 marks Section B: 30 marks Section C: 25 marks.</p>
<p>The paper will consist of calculations, multiple-choice, short-answer and extended-writing questions.</p> <p>Questions in Sections B and C will be based on business contexts given in the paper.</p> <p>Calculators may be used in the examination.</p>	<p>The paper will consist of calculations, multiple-choice, short-answer and extended-writing questions.</p> <p>Questions in Sections B and C will be based on business contexts given in the paper.</p> <p>Calculators may be used in the examination.</p> 

## What is the split between examinations and controlled assessment?

The course is assessed by 100% examination and no controlled assessment.

### **Who is the course for?**

It doesn't matter if you haven't studied business prior to taking this course. You might have an interest in business, and want to start your own business one day. You may have an enquiring mind and be interested in learning about the world around you, how businesses are set up, and what it is that makes someone a great entrepreneur. This course will help you to understand all this and more.

### **Where can this course take me after school?**

After this qualification you'll understand the world of business and have developed skills in:

- making decisions and developing persuasive arguments
- creative and practical problem solving
- understanding data, finance and communication.

### **Which careers might be suitable with this qualification?**

It's a great step preparing you for further and higher education such as A levels and BTEC courses. A GCSE Business course could help prepare you for an entrepreneurial role and help you to gain an understanding of what is involved in a business-related profession, like accountancy, law, marketing or the leisure and tourism industry.

### **Who can I contact if I want some more information?**

**Name:** Mr O. Harris

**Email address:** [oharris@ellowes.dudley.sch.uk](mailto:oharris@ellowes.dudley.sch.uk)

# BTEC Tech Award in Enterprise (Option)

## What is Enterprise?

Firstly, an enterprise is simply another name for a business.

Secondly, and perhaps more importantly, the word enterprise describes the actions of someone who shows some initiative by taking a risk by setting up, investing in and running a business.

## What will I study?

The main focus is on the knowledge, understanding and skills required to research, plan, pitch and review an enterprise idea that includes:

- development of key skills including market research, planning and carrying out financial transactions.
- knowledge of the features and characteristics of enterprises and entrepreneurs, and the internal and external factors that can affect the performance of an enterprise.

## Which skills will I need to do well in this subject?

To be successful in this subject you need to be good at:

- Numerical skills
- Time management
- Independent learning
- Communication

## How will be assessed?

There are two units of controlled assessment which are marked internally and then sampled by external verifiers. There is one exam which can be re taken if necessary.

## What is the split between examinations and controlled assessment?

Component	Component Title	How assessed
1	Exploring Enterprises	Internal
2	Planning and Presenting a Micro-Enterprise Idea	Internal
3	Marketing and Finance for Enterprise	External

## Who is the course for?

This course is for students who have an interest in studying local enterprises and also developing their own ideas for their own enterprise.

## Where can this course take me after school?

Learners who generally achieve at Level 2 across their Key Stage 4 learning might consider progression to:

- A Levels as preparation for entry into higher education in a range of subjects
- study of a vocational qualification at Level 3, such as a BTEC National in Enterprise and Entrepreneurship, which prepares them to enter employment or apprenticeships, or to move on to higher education by studying a degree in the business sector.

## Which careers might be suitable with this qualification?

There is not one job that is not run as a business! The knowledge and skills that you learn will prepare you for any career but some popular ones are owning your own enterprise, banking, accounting and sales.

## Who can I contact if I want some more information?

Name: Oliver Harris

Email address: [oharris@ellowes.dudley.sch.uk](mailto:oharris@ellowes.dudley.sch.uk)

# Eduqas GCSE Food Preparation & Nutrition (Option)



## What will I study?

You will learn the theory in preparation for their examination and their NEA (Non-examination assessment).

This will include practical outcomes with; Fruit and vegetables, Dairy Produce, Cereals & Pasta, Meat & fish, Butter, oils & sugars, and Soya, tofu, beans, nuts, seeds. Each commodity is based on a 6 week half term programme. In each commodity, they will learn the following;

- Provenance
- How commodity is grown/reared and processed and its Classification
- Nutritional values (include sources, functions, deficiencies, excess, daily requirements)
- Dietary considerations
- Food science
- Food hygiene and safety
- Storage

## Which skills will I need to do well in this subject?

A plethora of skills are needed to achieve in this subject;

- A love or passion for cooking/ baking
- Resourceful - Organisational with time management and ingredients
- Resilience - Ability to problem solve
- Creative skills to adapt dishes and food style
- Literacy
- Numeracy

## How will be assessed?

Year 10 Component 1: Principles of Food Preparation and Nutrition

Students will take an end of unit commodity test every half term to measure progress.

Food/ dishes will be photographed and practical assessments will be included.

Students will have weekly homework tasks as well as revision for end of unit tests and mocks.

Year 11 Component 2 – Non- Examination Assessments (NEA's) – Autumn term – Spring term

NEA 1 – Food Science investigation worth 15% of final GCSE grade 30 marks available. This is a 1500/2000 document that includes photographs and charts. Students will need to research, plan and carry out a scientific investigation on the task given from the examination board and then analyse and evaluate results to form a conclusion. The task is released by the examination board on the 1<sup>st</sup> September and changes every year.



NEA 2 – Food research, plan, cook and evaluate project worth 35% of final GCSE grade 70 marks available. This is a 30 side A4 document that includes research, plans, photographs, charts and evaluations. Students will need to research, trial practical's, produce a plan to cook 3 highly skilled dishes and compliments, cook the dishes in a 3 hour exam and evaluate in depth. The task will be released by the examination board on the 1<sup>st</sup> November and changes every year.

### **What is the split between examinations and controlled assessment?**

#### **Exams**

GCSE written exam (1 hour 45 minutes) Summer of Year 11 = 50%

NEA'S (None Examination Assessment) Autumn and Spring of Year 11 = 50%

### **Who is the course for?**

Any student that is willing to develop the success skills towards high achievement.

### **Where can this course take me after school?**

The best places to study Practical Food courses for Food Science, Chefs with focus on cooking or bakery are Halesowen College and UCB University College Birmingham

### **Which careers might be suitable with this qualification?**

With higher education qualifications alongside key GCSE's this course will allow you to access to you could become;

- Nutritionist
- Food Teacher
- Food stylist
- Food labelling specialist
- Food Scientist
- Food product developer
- Chef
- Dietitian
- Food critic
- Environmental health officer

### **Who can I contact if I want some more information?**

**Name:** Mrs M Stobbart (Subject lead for Food Preparation & Nutrition)

**Email address:** [mstobbart@ellowes.dudley.sch.uk](mailto:mstobbart@ellowes.dudley.sch.uk)

# GCSE French (Option)



## What you will study in y10 and y11

You will develop your knowledge of vocabulary and language structure and your ability in the four language skills: Listening, Speaking, Reading and Writing. During the course you will study a range of interesting themes. These include:

- Identity and Culture which includes French Festivals, Food and Music.
- Local Area, Holidays and Travel
- School
- Future Aspirations, Study and Work
- National and International Global Issues, which includes topics such as the Environment.

## The skills you will develop by studying French

The GCSE course will enable you to understand and use French independently and creatively, so that you will have a solid basis from which to progress to A level or employment.

Having already studied French at Key Stage 3, you will have achieved an excellent foundation to further develop your knowledge and language skills at GCSE level.

During the GCSE course you will continue to develop your practical language skills. For example, speaking and understanding French in conversation about everyday topics.

Studying the language will help you to develop cultural awareness and an appreciation of the French speaking world. Learning French can also help you to improve your communication skills (both written and verbal)

Studying another language helps you to improve your listening skills and will make you more confident in presenting to others. You will also develop the transferrable skills of problem solving, resilience and creativity. It can even help you perfect your English by making you more aware of the grammar rules of languages.

## How you will be assessed

You will be assessed in the four language skills:

- Listening
- Speaking
- Reading and

- Writing

Each of the skills will count for 25% of the final grade. All four exams are conducted at the end of the course and students can be entered for either Foundation or Higher. Students are well supported and prepared throughout the course for all of these exams.

### **What to expect at KS4**

Studying a language takes regular practice and learning a little bit often will help you to improve and to build resilience. A positive attitude and a willingness to experiment and not worry about making mistakes, will really help you to improve. We will expect you to take part in speaking activities which will normally be in pairs or small groups. After all, communication is the main aim!

### **How French will help you in the future**

French is spoken in many countries and by over 275 million people around the world. Students are able to continue their studies by progressing on to an A Level in French. Many universities offer a foreign language option in degree courses as diverse as Media Studies, Economics, Law, Engineering and Business Studies.

The government now recognises that learning a foreign language to GCSE level is vital as part of a broad and balanced curriculum and a foreign language forms part of the EBACC qualification. The ability to communicate in a foreign language can lead to a wider range of career opportunities. Students in most EU countries study two foreign languages to examination level, so a qualification in a language is becoming increasingly important to ensure equality of opportunity for British people. All students at Ellowes benefit from the study of one foreign language and it will be beneficial to those considering a career with an international dimension – as a holiday rep, in the travel industry, secretarial or translation work in a multinational company and banking. A GCSE Modern Foreign Language is also now considered invaluable by universities.

Think of a job with French rather than a career in French; there is great career choice both in this country and abroad. Here are some career fields that languages can lead to:

- Tourism
- International Development and Aid
- Marketing
- Teaching
- Designing
- Journalism
- Interpreting and Translating
- Law
- The arts
- Politics

### **Who can I contact if I want some more information?**

**Name:** Ms Cairns

**Email address:** [jcairns@ellowes.dudley.sch.uk](mailto:jcairns@ellowes.dudley.sch.uk)



# BTEC Level 1/2 Tech Award in



## Health and Social Care (Option)

### What will I study?

Health and Social Care is an exciting qualification that allows you to explore and develop your knowledge, skills and understanding of the Health, Social Care and the Children & Young People's Sector. It will give you a real understanding and feel for what it entails to work in these sectors, and it will prepare you for work in a wide range of disciplines. Health and Social Care also involves gaining an in-depth knowledge of human growth and development. The knowledge gained will be of great advantage to anyone who would like to work and deal with people.

### **Component 1 Human Lifespan Development (30%) Coursework**

- Human growth and development across life stages
- Factors affecting growth and development
- Different types of life event
- Coping with change caused by life events

### **Component 2 Health and Social Care Services and Values (30%) Coursework**

- Health and social care services
- Barriers to accessing services
- Care values
- This unit will give you an understanding of the health and social care service and help you to develop skills required across the sector

### **Component 3 Health and wellbeing (40%) Externally Assessed Exam**

This external component builds on knowledge, understanding and skills acquired and developed in Components 1 and 2. You will be given a case study and will assess an individual's health and wellbeing, drawing on your understanding of life events from Component 1. You will design a health and wellbeing improvement plan that draws on your knowledge of services and care values from Component 2. A task will be completed under supervised conditions. The supervised assessment period is a maximum of two hours.

### Which skills will I need to do well in this subject?

In order to study this course successfully you will need to be able to complete independent research, contribute to class discussion and group work tasks, work with case studies and complete extended written assignments and short written tasks.

### How will I be assessed?

Unit 1 – Human Lifespan Development. This is written coursework part of the course.

You will for A. choose a client and assess their development across 3 life stages and consider factors that have impacted on their development. B. Consider and compare the impact of life events on two individuals

Unit 2 – Health and Social Care Services and Values. This is written coursework part of the course.

In this unit you will for A investigate different types of Health and Social Care Services and any barriers to

accessing these. B. Demonstrate care values and review own practice

Unit 3 – Health and Wellbeing. This is the externally assessed exam part of the course.

You will develop and design a Health and Wellbeing plan and reflect and improve your plan by drawing on prior knowledge.

### **What is the split between examinations and controlled assessment?**

The course has two internally assessed components (60%), and one that's externally assessed (40%)

### **Who is the course for?**

BTEC Level 2 Tech Award in Health and Social Care is an interesting course, particularly if you are considering a career in Health, Social Care or Early Years Services, which are areas of the job market that continue to grow. If you are interested in a caring profession, Health and Social Care is for you. As well as the course content, you will learn a wide variety of skills which all employers seek.

### **Where can this course take me after school?**

This is a nationally recognised vocational course and can lead on to the Level 3 qualification at college. It also leads directly into a wide variety of professions and roles in the Health & Social Care sector.

### **Which careers might be suitable with this qualification?**

A BTEC Tech Award in Health and Social Care will enable progression to further study, training or employment, and enable you to make an informed choice with regard to a career in this sector. The NHS, as the main employer, has a continual need for doctors, nurses, ambulance staff and support staff, and there are further opportunities to work for the NHS in social care in hospitals, educational settings and residential homes. When you include the sizeable private and voluntary care sectors, you have a huge and diverse range of progressive career opportunities.

### **Who can I contact if I want some more information?**

**Name:** Mr A Di Bernardo

**Email address:** [adibernardo@ellowes.dudley.sch.uk](mailto:adibernardo@ellowes.dudley.sch.uk)

# OCR Level 1/2 Cambridge National in Creative iMedia (Option)

## What will I study

### **Core – Exam- Unit R093: Creative iMedia in the media industry**

- The Media Industry:
  - Media industry sectors & products
  - Job roles in the media industry
- Factors influencing product design:
  - How style, content and layout are linked to purpose
  - Client requirements and how they are defined
  - Audience demographics and segmentation
  - Research methods, sources & types of data
  - Media codes used to convey meaning, create impact and/or engage audiences
- Pre-Production planning:
  - Work planning
  - Documents used to support ideas generation
  - Documents used to design and plan media products
- The legal issues that affect media:
  - Legal considerations to protect individuals
  - Intellectual property rights
  - Regulation, certification and classification
  - Health & Safety
- Distribution Considerations:
  - Distribution platforms and media to reach audiences
  - Properties and formats of media files

### **Core – Controlled Assessment- Unit R094: Visual identity and digital graphics**

- Develop visual identity:
  - Purpose, elements and design of visual identity
- Plan digital graphics for products:
  - Graphic design and conventions
  - Properties of digital graphics and use of assets
  - Techniques to plan visual identity and digital graphics
- Create visual identity and digital graphics:
  - Tools & techniques of imaging editing software used to create digital graphics
  - Technical skills to source, create and prepare assets for use within digital graphics
- Visual identity and digital graphics:
  - Techniques to save and export visual identity and digital graphics

### **Controlled Assessment- Unit R097: Interactive Digital Media**

- Plan interactive digital media
- Create interactive digital media
- Review interactive digital media

### Which skills will I need to do well in this subject?

- the purpose and uses for pre-production documents;
- interpreting client requirements;
- identifying timescales for production;
- how to conduct and analyse research;
- identifying the target audience;
- how legislation applies to Computing;
- reviewing products;
- understanding the purpose and properties of digital graphics, multipage websites and digital video sequences.

### How will be assessed?

Course consists of 3 modules, 1 exam worth 40% and two controlled assessment units each equivalent to 30%.

### What is the split between examinations and controlled assessment?

Exam Unit			Controlled Assessment Units		
R093- Creative iMedia in the media industry	<ul style="list-style-type: none"><li>• 70 marks</li><li>• 1 hour 30 mins</li><li>• Written paper (Exam</li></ul>	40% of total GCSE	R094- Visual identity and digital graphics	<ul style="list-style-type: none"><li>• 60 marks</li><li>• Approx. 30 hours</li><li>• Controlled Assessment</li><li>• OCR moderated</li></ul>	30% of total GCSE
			R097- Interactive Digital Media	<ul style="list-style-type: none"><li>• 60 marks</li><li>• Approx. 42 hours</li><li>• Controlled Assessment</li><li>• OCR moderated</li></ul>	30% of total GCSE

### Who is the course for?

This course encourages independence and creativity and awareness of the digital media sector. This course challenges all learners, including high attaining learners, by introducing them to demanding material and techniques. The qualification design, including the range of units available, will allow learners the freedom to explore the areas of creative media that interest them as well as provision good opportunities to enhance their learning in a range of curriculum areas.

### Where can this course take me after school?

- Level 3- A Level Media Studies
- Level 3- Apprenticeship Media & Broadcast Assistant Pathway
- Level 3- Cambridge Technical Information Technology & Digital Media
- Level 3- T Level Digital Production, Design & Development
- Level 3- T Level Media, Broadcast and Production

### Which careers might be suitable with this qualification?

- Website developer
- Graphic Designer

### Who can I contact if I want some more information?

Name: Mrs O McEvoy

Email address: [omcevoy@ellowes.dudley.sch.uk](mailto:omcevoy@ellowes.dudley.sch.uk)

# OCR GCSE Music (Option)

## GCSE Information

### What will I study?

At GCSE level, you will develop your performing skills as a soloist and as part of an ensemble. You will also develop your skills as a composer and study music theory whilst analysing a variety of musical genres.

### Which skills will I need to do well in this subject?

You will need to sing or play an instrument and it is also very helpful to have a good understanding of music theory.

### How will I be assessed?

**Coursework:** Solo Performance (15%), Ensemble Performance (15%), Brief Composition (15%), Free Composition (15%)

**Exam:** Written Listening Exam (40%)

### Who is the course for?

If you love to perform or you write your own music and you want to learn more about the history of music, this course may well be for you! Please be aware, however, that if you have a high target grade (6 or above) and you have not been regularly practising an instrument, it may be difficult for you to reach this grade. This is because the grade boundaries are high in Music and 30% of your marks are based on the performances. Please speak to your teacher if you are unsure.

### Where can this course take me after school?

After taking GCSE music, you may want to study A Level Music or a BTEC in Music – at Invictus, we offer both courses as well as a BTEC in Performing Arts with a Musical Theatre pathway. Both A Level Music and BTEC Music Performance will set you up well to study Music at University, the main difference is that BTEC Music is more coursework based. You can also complete a Diploma in Performance on an instrument of your choice which will help you to get onto performance courses at Universities, Colleges and Conservatoires.

### Which careers might be suitable with this qualification?

There are a large number of careers available for musicians to continue to follow their passion, such as; film and game music composer; conductor; performer; singer-songwriter; producer; director; music teacher; music therapist; manager; sound engineer – to name just a few!

### Who can I contact if I want some more information?

**Name:** Mr J Bailey

**Email address:** [jbailey@ellowes.dudley.sch.uk](mailto:jbailey@ellowes.dudley.sch.uk)



# AQA Spec A GCSE Religious Studies (Option)



## What will I study?

You will study beliefs, teachings and practices from both Christianity and Islam.

You will also study ethical topics such as **Relationships and family** where we look human sexuality, relationships outside of marriage. Marriage and divorce, re marriage, contraception, the nature and purpose of families. Also, the topic **Religion and Life** which includes abortion, euthanasia and animal cruelty and the origins a of human life, the use and abuse of the environment. Death and the afterlife. The topic the **Existence of God and Revelation** we look at the First cause argument, Arguments from design miracles revelation. The finale topic is on **Crime and punishment** reasons for crime, aims of punishment, attitudes towards suffering and evil, treatment of criminals, prison, forgiveness and death penalty. All the topics are looked at from an atheist viewpoint, a Christian also the Islamic perspective.

## Which skills will I need to do well in this subject?

You will need knowledge, understanding and evaluation skills from both religions. Learn quotes and key ideas from both the Bible and the Qur'an. You will the learn key words and evidence used to back up ideas from the religions.

You will need to answer 5 questions on each topic all done in the same format. Question 1 of the multi choice worth (1 mark) Question 2 is factual (worth 2 marks), Question 3 (worth 4 marks) and Q4 is knowledge and understanding and worth (5 marks). Question 5 is a combination of all three skills. Answering a statement from both a Christian, Islamic and your own perspective. This question is worth (12 marks plus spag marks)

## How will be assessed?

The AQA exam is based on two separate exams.

- The first exam relates to the Christian/ Islamic beliefs and teachings and practices (20 questions in total using the same format as above)
- The second exam is the Thematic paper with the 4 different ethical topics. Each having 5 questions done again in the same format for each topic from both religions.

## Who is the course for?

The course helps pupils who wish to work with people. Such as doctors, nurses, Police officers, Teachers, Social workers, prison officers in fact any profession that works with people to understanding the multicultural aspects of life.

**Which careers might be suitable with this qualification?**

The course helps pupils who wish to work with people. Such as doctors, nurses, police, ambulance, social workers, teachers, prison officers, paramedic any profession that works within the multi-cultural society in the UK and beyond.

**Who can I contact if I want some more information?**

**Name:** Miss J Vincent

**Email address:** [jvincent@ellowes.dudley.sch.uk](mailto:jvincent@ellowes.dudley.sch.uk)

# Pearson BTEC Level 1/2

## Sport, Activity and Fitness (Option)

### Why Should I Pick This Course?

You should pick this course if you have a passion for sport, and like different aspects to sport and physical activity. You need to understand that sport isn't just playing. It involves understanding about different elements such as coaching, fitness, leadership and helping and supporting others.

You need to understand how sport is played and the role of the officials within sport. You will be assessed on your practical ability within a chosen sport. You will also need to plan and deliver a coaching session.

You will need to understand about fitness and different components of fitness and how through training you can develop not just your fitness but other people also.

You will look at technology and how different technology can be used in sport to help people improve their fitness and performance.

### What Jobs Can I Get with This Qualification?

The Level 2 BTEC Tech Award In Sport qualification is the stepping stone to any 16+ pathways, such as A Level PE or any Level 3 Sport qualification. The sport and leisure sector is one of the fastest growing job sectors with lots of jobs and opportunities. These include but are not exclusive to careers in

Leisure Facility Management, Personal Trainers, Sports Coaching/Management, Sports Psychologists/Consultancy, PE teaching, Nutritionists, Health and Lifestyle coaching, Sports Journalism, Sports Scientists. Behaviour Management Strategists. Motivational Speakers, Sports Data and Sports Technology.

### What if I Am Not Got Practically?

Although being good at sport helps, more important is your knowledge of sport, health and fitness and a willingness to learn and develop your knowledge. You will need to understand coaching and leadership as you will be assessed practically in these areas.

## Content Overview

The course is broken down in to 3 Components which you will study in Year 10 and Year 11

**Component 1: Preparing Participants to Take Part in Sport and Physical Activity.** Learners will explore the different types and provision of sport and physical activity available for different types of participants, barriers to participation and ways to overcome these barriers to increase participation in sport and physical activity. They will also research equipment and technological advances in a chosen sport or physical activity and how to prepare our bodies for participation in sport and physical activity. This is worth **30% of your overall grade.**

**Component 2: Taking Part and Improving Other Participants Sporting Performance** Learners will investigate the components of fitness and their effect on performance, take part in practical sport, explore the role of officials in sport and learn to apply methods and sporting drills to improve other participants' sporting performance. This is worth **30 % of your overall grade.**

**Component 3: Developing Fitness to Improve Other Participants' Performance in Sport and Physical Activity** Learners will be introduced to and develop an understanding of the importance of fitness and the different types of fitness for performance in sport and physical activity. They will also develop an understanding of the body and fitness testing. This is the exam unit and is worth **40 % of your overall grade.**

### How Will I Be Assessed. ?

Component 1 and Component 2 are controlled assessment units. This means producing your work on a computer in assessment conditions. This may through a written report or a power-point presentation. You will be assessed practically on your coaching and your practical performance in Component 2. In Component 1 you will be assessed on your ability to plan and perform a warm up. Component 3 is the exam unit. This will be assessed through a written exam taking place in Year 11. Your teacher will then mark and assess your work before this is externally assessed. You will undertake your exam at the end of Year 11.

### What Grades Will I Get?

You will be graded numerically for each component. These will be totalled up over the course and a grade will be awarded.

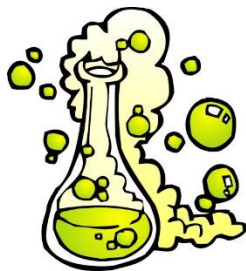
Grade	GCSE Numerical Value
Level 1 Pass	1.25
Level 1 Merit	2
Level 1 Distinction	3
Level 2 Pass	4
Level 2 Merit	5.5
Level 2 Distinction	7
Level 2 Distinction *	8.5

### Any Questions?

Contact Name: Mr. I. Smith Email address: [I.Smith@ellowes.dudley.sch.uk](mailto:I.Smith@ellowes.dudley.sch.uk)

Contact Name: Mr L. Martin E Mail address [L.Martin@ellowes.dudley.sch.uk](mailto:L.Martin@ellowes.dudley.sch.uk)

# AQA Triple Science (Option)



## What will I study?

If you choose to study Triple Science, you will gain 3 GCSEs in Science: GCSE Biology; GCSE Chemistry; GCSE Physics. Along with the normal content for the Science GCSE you will have an extra 2 lessons to learn the extra content. Lessons include: nanoparticles, fuel cells, alloys, the eye, dialysis, mutations, cloning, red shift, satellites, transformers, microphones, black body radiation.

The exam board is AQA. More details including the full specification for all Science GCSEs is available at: <http://www.aqa.org.uk/subjects/science/gcse> .

Specifications - GCSE Biology (8461); GCSE Chemistry (8462); GCSE Physics (8463)

## How will be assessed?

There are 6 GCSE exams (2 Biology, 2 Chemistry and 2 Physics) which is the same as the normal GCSE but instead of being 70 mins they are 1h 45. There is no coursework for this GCSE but you will be expected to complete required practicals which will be assessed as part of the written exams.

## Who is the course for?

By taking sciences separately at GCSE level you will cover more content, so you'll be better prepared if you want to take science A-levels. Pupils who take separate GCSE science are also more likely to get higher grades in A-level sciences. This course is difficult but if you have a natural interest in Science and are thinking of going onto the Science A-Levels, this is the course for you.

## Where can this course take me after school?

Having Triple Science will spring board you onto the Science A-Levels which in turn onto the Science degrees at University. Science degrees are some of the most well-paid graduates. Here are some statistics:

- **Science pays.** Over their lifetimes, chemistry and physics graduates can expect to earn at least £60,000 more than the average for a degree holder (Price Waterhouse Coopers report *The Economic Benefits of Higher Education Qualifications*, 2005)
- **People with science skills are in demand.** 92% of firms (across all sectors) employ STEM skilled people, but 59% of firms were experiencing problems recruiting STEM (Science, Technology, Engineering and Maths), skilled employees (CBI Education & Skills Survey 2008).
- **The UK will need more science skills to prosper.** There will be more than 2m extra jobs requiring people to have STEM skills by 2014 (CBI estimate based on *Skills for Business's report Working Futures 2004-2014*).

· **Science jobs give good starting salaries.** Starting salaries for science sector jobs can be as much as £32,000 putting them in the top 20% of starting salaries. STEM graduates working in investment banking enjoy starting salaries of up to £37,000 (*Association of Graduate Recruiters, Summer Review 2008*).

· **Science skills are valued.** The Future Innovators Team at the National Endowment for Science, Technology and the Arts recently reported that “the skills of problem solving, enquiry and independent thinking that science encourages are also key for young people to be better equipped for the future.

### Which careers might be suitable with this qualification?

Geoscientist, forensic scientist, astrologer, electrician, nuclear power reactor operator, marine biologist, pharmacist, doctor, physiotherapist, microbiologist, chemical engineer, oceanographer, wildlife biologist and a nurse.

### Who can I contact if I want some more information?

Name: Mrs Ming

Email address: [rming@ellowes.dudley.sch.uk](mailto:rming@ellowes.dudley.sch.uk)



# Pearson BTEC Level 2 First Award in Travel and Tourism (Option)



## What will I study?

This qualification is a real hands on one! We spend lots of time looking at travelling, travel destinations, methods of travel and the hospitality that goes with it. We do all of this using live situations all beneficial to you when you start organising your own holidays! Maybe even take a career in the travel and tourism industry! You will explore lots of sectors of travel and tourism and pick up global knowledge on attractions and features of tourism across the world. You will investigate the importance of the travel and tourism sector to the UK, and have the opportunity to study international travel and tourism. We spend lots of time in to camps; the customer and the worker, both of which will be helpful to you in later years.

You will study the following four units.

- Unit 1: UK Travel and Tourism sector. This is the exam unit. Its the general overview of all things Travel and Tourism and gives you the knowledge to not only pass the exam but be successful in the coursework element too.
- Unit 2: UK Travel and Tourism destinations. This is a coursework element made up of three aims. We look at travel across the UK, key features of the UK and we look at booking holidays for certain customers in the UK.
- Unit 3: The Travel and Tourism customer experience. This unit is studied at the end and we bring together all of our experiences throughout the course. The focus is on how important Customer Service is to Tourism and is a real transferrable skill into any walk of life.
- Unit 4: International Travel and Tourism destinations. This is the same as unit 2 but looks at Tourism on an international footing.

## Which skills will I need to do well in this subject?

In order to study this course successfully you will need to be able to complete independent research, contribute to class discussions, communicate with a variety of people and possess logical thinking. You will develop your report drafting, writing skills and project management. This is a course that develops lots of pragmatic skills, all of which are needed to be effective adults!

## How will I be assessed?

The assessment for Unit 1 is a 75-minute examination that is sent away to be marked. The exam includes multiple-choice and open-ended-response questions which you will have covered in the theory lesson and through your coursework. These bigger questions can range up to 12 marks so you will need to write at length.

The other three units are internal coursework tasks. They are all loaded onto the school platform and we work through them in turn. Your teacher will assess and mark these and so you will receive feedback as to how you are getting on. Evidence for assessment can be generated through a range of activities, including written work, practical performance and verbal presentations. Although this is all done internally, there are strict guidelines of what is expected out of each piece of work and deadlines to stick to at all times.

### **What is the split between examinations and controlled assessment?**

All units hold the same weighting. You must complete and pass all units if you are to achieve a Level 2 grade overall. Three units are ongoing coursework and one unit is an external exam. You must pass the exam within 2 attempts to allow yourself to be in contention to achieve a level 2. A Level 2 means a grade 4 or above at GCSE.

### **Who is the course for?**

In simple terms everybody. This is a very interesting course, particularly if you are considering a career in the travel and tourism sector. As well as the subject specific content you will learn a wide variety of skills which all employers seek. And really this is for anyone that enjoys a good holiday! We learn so much about the UK and the World in this course that we hope this encourages our students to go on and travel and see the world when older, or maybe even rope your parents/carers in!

### **Where can this course take me after school?**

There are plenty of level 3 courses that link directly to this course, this is the equivalent of A level. However even if tourism isn't your end goal, you can still use the skills in this course for anyone considering retail, your own business or anything that would lead to you being involved with members of the public.

### **Which careers might be suitable with this qualification?**

Travel and tourism jobs cover a wide spectrum but generally include any job within the holiday market. Whatever your skills and interests, there's almost certainly a job for you in this sector. Whether that be helping customers plan for a holiday, source a great place to stay or help to keep holiday-makers safe and comfortable during their holiday. Popular choices we have seen so far have been air hostesses and travel representatives. However maybe you could go on to work for Lonely Planet, The Travel Channel or be the next big Travel Blogger! It is a sector that provides the opportunity to work in the local area or overseas.

### **Who can I contact if I want some more information?**

Name: Mr J Marsh

Email address: [jmarsh@ellowes.dudley.sch.uk](mailto:jmarsh@ellowes.dudley.sch.uk)

